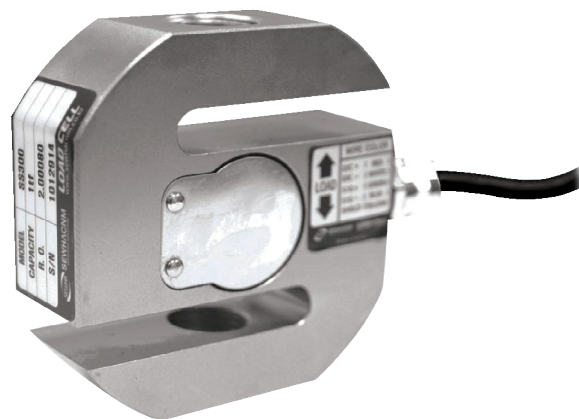


SS300

SS - Beam Load Cell 50kgf ~ 10tf

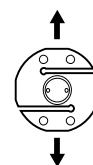


Feature

- Low Cost
- Compact Design
- Compression Type
- Protection Class IP66
- Nickel Plated Steel
- Braided Shield 4-Wire Round Cable

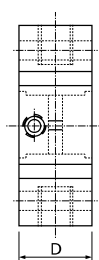
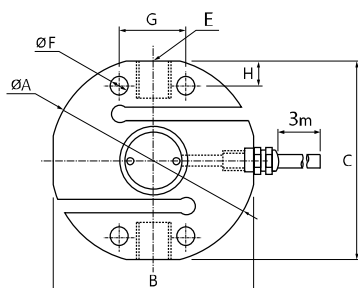
Option

- Stainless Steel - LS300 (MOQ Base)



Rated Capacity (R.C)	kgf / tf	50, 100, 150, 200, 250, 300, 500kgf, 1, 2, 3, 5, 10tf
Rated Output (R.O)	mV/V	2.0 ± 0.005
Zero Balance	mV/V	0 ± 0.02
Combined Error	%	0.03
Repeatability	%	0.01
Creep (30min)	%	0.03
Temperature Effect on		
Zero Value	% / 10°C	0.03
Output Value	% / 10°C	0.02
Excitation		
Recommended	V	10
Maximum	V	15
Resistance		
Input	Ω	400 ± 30
Output	Ω	350 ± 3.5
Insulation	M Ω	> 2,000
Compensated Temp Range	°C	-10 ~ +40
Operating Temp Range	°C	-30 ~ +80

Model	Capacity	ØA	B	C	D	E	ØF	G	H	Weight
SS300 ~ 50kgf	50kgf	80	74	76	19	M12xP1.75	-	-	-	1.0kg
SS300 ~ 150kgf	150kgf				26					
SS300 ~ 200kgf	200kgf	80								
SS300 ~ 250kgf	250kgf		74							
SS300 ~ 300kgf	300kgf	26								
SS300 ~ 500kgf	500kgf		80							
SS300 - 1tf	1tf	M18xP1.5								
SS300 - 2tf	2tf		115							
SS300 - 3tf	3tf	90								
SS300 - 5tf	5tf		120							
SS300 - 10tf	10tf	123								
			36							
		M24xP2.0								
			13							
		M30xP2.0								
			21							
		64								
			29							
		7.5kg								



Unit : mm

CABLE COLOR CODE	
EXC +	(RED)
EXC -	(WHITE)
SIG +	(GREEN)
SIG -	(BLUE, BLACK)
SHLD	(YELLOW)